

Haitian Jupiter Series



# Haitian Jupiter Series

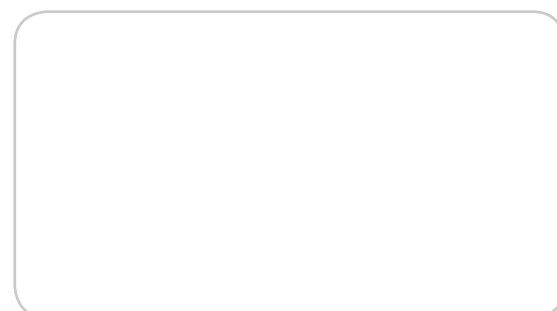
## HAITIAN INTERNATIONAL HOLDINGS LIMITED

Unit 1105 Level 11  
Metroplaza Tower 2  
223 Hing Fong RD Kwai Fong N.T  
haitian@mail.haitian.com  
www.haitian.com

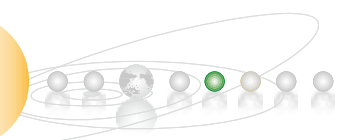
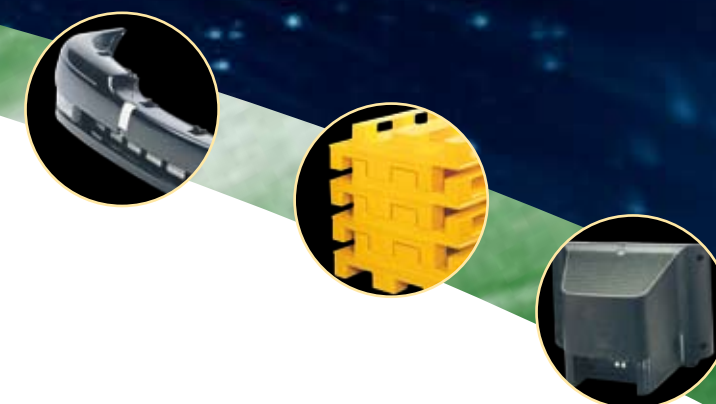
## NINGBO HAITIAN HUAYUAN MACHINERY CO., LTD.

Export Processing Zone, Ningbo 315800 China  
+86-574-86 177 242  
+86-574-86 221 864  
haitian@mail.haitian.com  
www.haitian.com

## Haitian Partner:



HT 080315-IV





# Haitian Jupiter Series

## The two-platen injection molding machine

Haitian is one of a few companies all over the world manufacturing large injection molding machines with clamp forces above 10000 kNs. Haitian has been highly successful in this large machine market, achieving 60% market share in China, the worlds' largest market for big machines.

This success is based on Haitians commitment to a strategy of Research & Development and pursuit of innovation

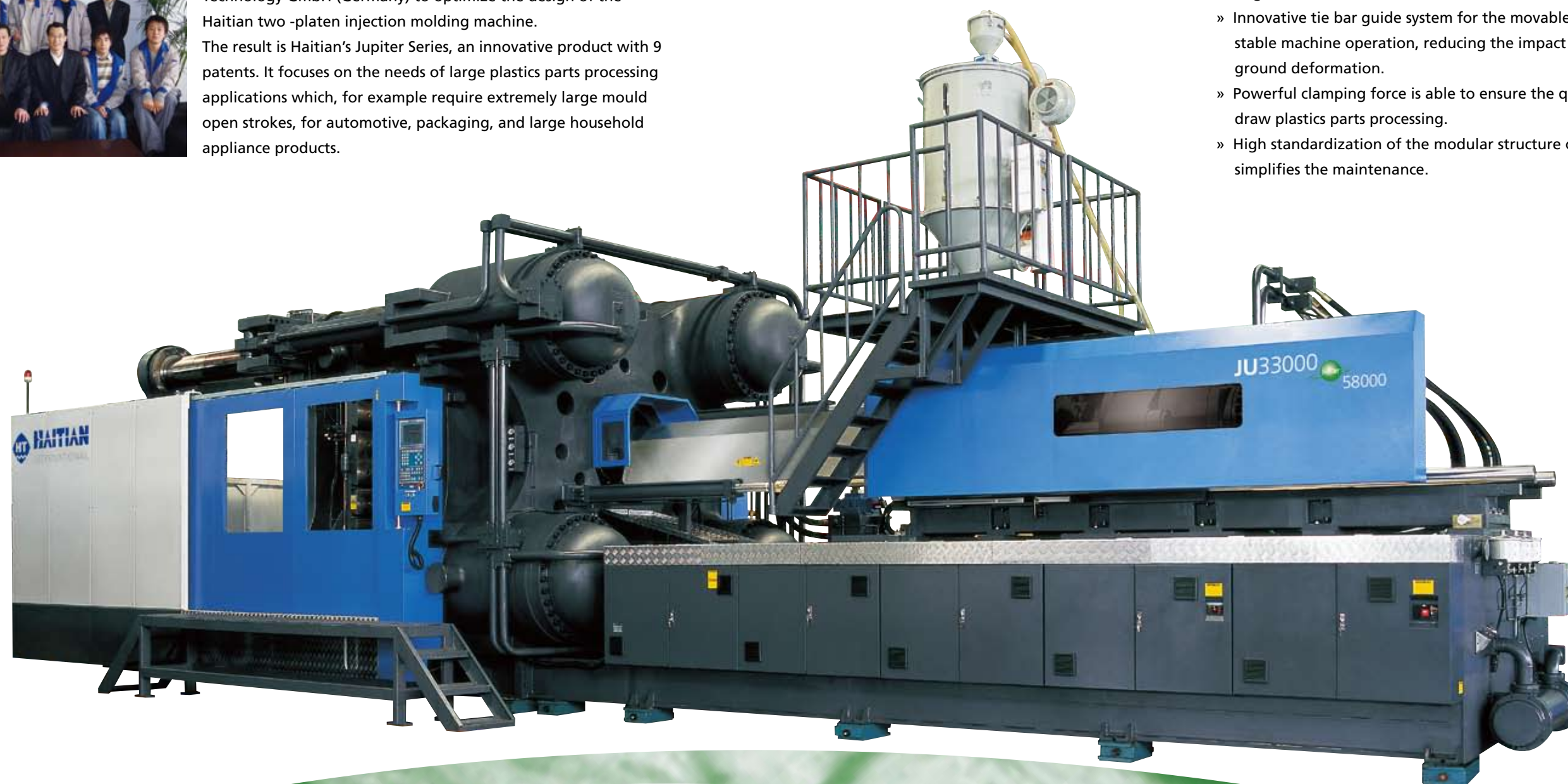


on each level Haitian the big machine designs For example, Haitian design engineers worked closely with Phoenix Technology GmbH (Germany) to optimize the design of the Haitian two -platen injection molding machine.

The result is Haitian's Jupiter Series, an innovative product with 9 patents. It focuses on the needs of large plastics parts processing applications which, for example require extremely large mould open strokes, for automotive, packaging, and large household appliance products.

## We create advantage:

- » Innovative and compact design ensures the efficient use of material and energy conserving environmental resources.
- » Generous mold installation area and extra long opening stroke provides the flexibility and freedom for running heavy and large volume moulds.
- » Innovative tie bar guide system for the movable platen ensures stable machine operation, reducing the impact caused by ground deformation.
- » Powerful clamping force is able to ensure the quality of deep-draw plastics parts processing.
- » High standardization of the modular structure of the machine simplifies the maintenance.





# Haitian Jupiter Series

*In detail.*

## General

- » Haitian standard color
- » Optimized machine configuration
- » Adjustable footpad
- » Spare parts
- » Professional machine tools
- » Autoloader & hopper-dryer

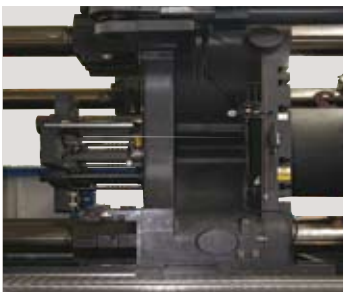
## Clamping unit

- » Balanced traverse cylinder symmetrically located for motion of movable platen.
- » hydraulic electrical safety gate interlock
- » Low pressure mold protection
- » Multi stage control of pressure, speed and position of mold open/close/ejection motions
- » Variable mode of ejector movement
- » Wear-resistant track of moveable platen
- » 2 pairs of hydraulic core pull for 12000kN to 14000kN, 3 pairs for 16000kN to 28000kN, 4 pairs for 33000kN to 60000kN
- » Automatic central lubrication
- » Auto-adjusted movable platen support system



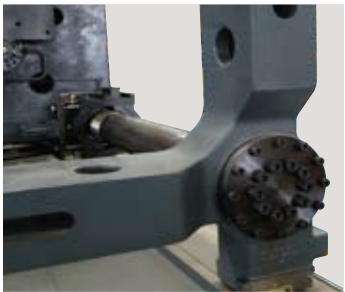
### Flexible ejection stroke

The ejector cylinder is oriented in the reverse direction so the force will be more evenly distributed to the ejector plate ensuring the quality of plastics parts.  
This ejection system also allows the flexible ejection stroke installation.



### High rigid & stabile:

Haitian's patent for optimal mold platen provides less distortion and longer life time.



### Reliable operation

Innovative tie bar support & guide system for the movable platen ensures platen parallelism, reducing the impact caused by ground deformation.



### Reliable locknut mechanism

Positional locking will not be interfered by mould, reliable and safe.



### Large capability:

A wide tie-bar distance, a long opening stroke and a bigger max. mold height provides flexibility and more freedom for large-size molds

### Advanced technology:

The KEBA control system ensures the precision of plastic parts processing.

### Sensitive& precise

Clamping force is monitored by a pressure-sensor, which improves the precision of the machine performance.



# Haitian Jupiter Series

## In detail.

### Injection unit

- » Two parallel drive cylinders for screw injection
- » Multi-stage profile of injection speed, pressure and Position
- » Multi-stage profile of holding pressure, time and speed
- » Multi-stage profile of charging speed, time and position
- » Controlled transfer position of injection to holding pressure
- » Monitored starting /ending position of injection
- » Controlled injection process by stoke sensor
- » Suck back function before/after plasticizing
- » Efficient plasticizing with high torque motor
- » Free selection of variable screw sizes depending on application
- » Cold start protection prevents screw movement before completely heating up
- » Nozzle protecting cover

### Hydraulics

- » Dynamic hydraulic system for fast mold open
- » Qualified hydraulic components from globally recognized suppliers
- » Oil tank with level control
- » Oil temperature alarm
- » By-pass oil filter



#### Reliable and sensitive:

Mold open/mold close is controlled by proportional valves to make every movement steady, sensitive, and accurate. The result is fast and balanced mold platen movement, small oil change volume and low energy consumption.



#### Hydraulic block:

The energy-saving hydraulics are quiet and are made of high-quality European components. They allow much greater forces to be transferred and enable very uniform and precise movements of the machine.

#### Low servicing costs:

Permanent fine filtration of the oil in the by-pass filtration system improves oil between oil changes.



#### Increased choice:

A large selection of screw sizes, materials, and geometries depending on the application. Special engineering materials ensure optimal material quality and processing life.

#### Easy access for maintenance

Injection unit can be swivelled out to the operator side which offers easy access for maintenance and screw changing.



#### Energy-saving drive system

Compact hydraulic system, aimed at saving energy to the maximum, consists of a dynamic fixed pump provide pressure and flow according to the absolute need. It also allows the parallel movements.



# Uniform control

*The latest technology from KEBA.*

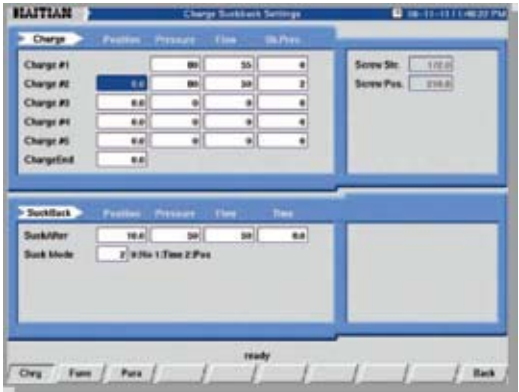
The Haitian Jupiter Series uses the latest control technology from KEBA. This high-performance control system provides the ideal communication between the injection molding machine and the operator. The uniform operating concept and logical, clear structure of the functions make machine operation easy and user-oriented.

Model 1075 is suitable for standard applications, while model 4030 lends itself to more complex injection molding processes. Both versions are currently delivered in 15 languages.

Because of the large quantity of units required per year, Haitian is given high priority by their European partner. Haitian experts work closely with the KEBA development team, positively influencing the development and expansion of hardware and software as well as the reliable services provided.

Both versions – 1075 and 4030 – have USB and Ethernet interfaces to enable the quick transfer of machine data for software updates and for connections to external printers.

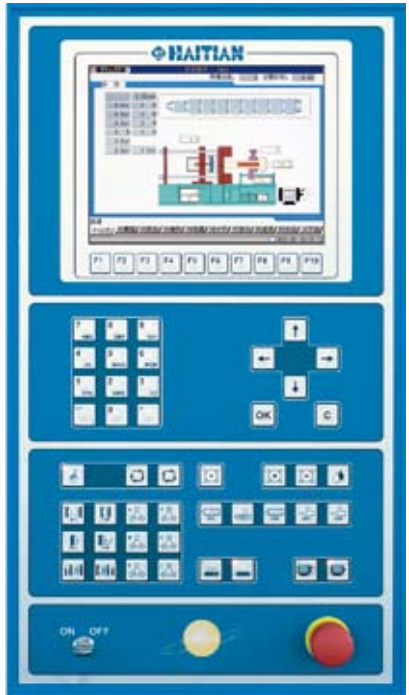
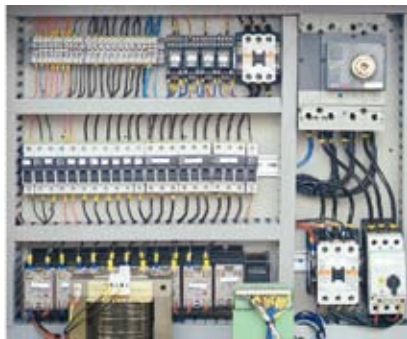
The graphical temperature displays for hot runner systems and heating equipment help to make controlling, monitoring and document machine processes easy and clear. This makes life easier for operators.



## 4030 system

*Special features.*

- » 12" touch screen monitor for easy and ergonomic use
- » Temperature display and control for up to 40 hot runner zones
- » Easy-to-use injection, holding pressure and dosing settings for the specified profiles
- » Cascade control of up to 12 injection valve gates circuits (pneumatic or hydraulic)
- » USB interfaces for the external backup of mold data and for connecting printers
- » Ethernet interface
- » RS232 and RS485 interfaces



## 1075 system

*Special features.*

- » Keyboard operated 10.4" color screen
- » Temperature display and control for up to 12 hot runner zones
- » Easy-to-use injection, holding pressure and dosing settings for the specified profile
- » Cascade control of up to 6 injection valve gate circuits (pneumatic or hydraulic)
- » USB interfaces for the external backup of mold data and for connecting printers
- » Ethernet interface



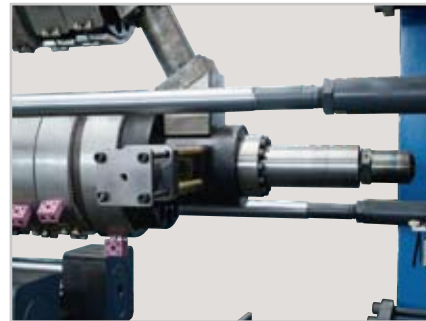


# Standard & Options

*Tailor-made and cost effective.*

## Options

- » Customized injection unit depending on application
- » Closed-loop control system using a Moog servo valve
- » Temperature controller for mold heating
- » Core pull function parallel to mold opening / closing
- » Spring shut-off nozzle
- » Accumulator assisted injection
- » Air valve
- » Additional core pull circuits
- » Flow meter
- » Variable pump
- » 3 color alarm light
- » E67 robot interface
- » Mold fixing pad
- » Magnet frame in hopper dryer
- » Dehumidifier
- » Chiller
- » Compressor
- » Conveyor belt
- » CE certification
- » CSA certification



### Shorten your cycle time:

The hydraulic shut-off nozzle allows cycle time reduction by permitting the mold to operate during plasticising, when used in conjunction with electric screw drive.



### Higher efficiency with lower energy consumption:

Electric screw drive is used for increased plasticizing and high precision with the benefits reducing energy consumption in during charging.



### Up to your choice:

A wide variety of screw designs for different polymer processing requirements are available.



### Be clear at one glance:

Equipped with the flow meter, the level of cooling water will be clear at even one glance. It also allows to adjust the flow volume and pressure for each zone of cooling water separately.



### Increased injection speed:

By installing an accumulator the injection speed will be improved significantly, which is recommended in the production of mass flow ratio components.

## Typical applications

### Automotive

» Lighting, bumper, interior

### Transport

» Pallet, can

### Household application

» TV housing, refrigerator housing, computer housing, Batteries.

### Enviromental usage

» Rubbish can

### Notes :

The selection of options requires pre-sales communication. We reserve the right to make changes to the content in this brochure without notification.